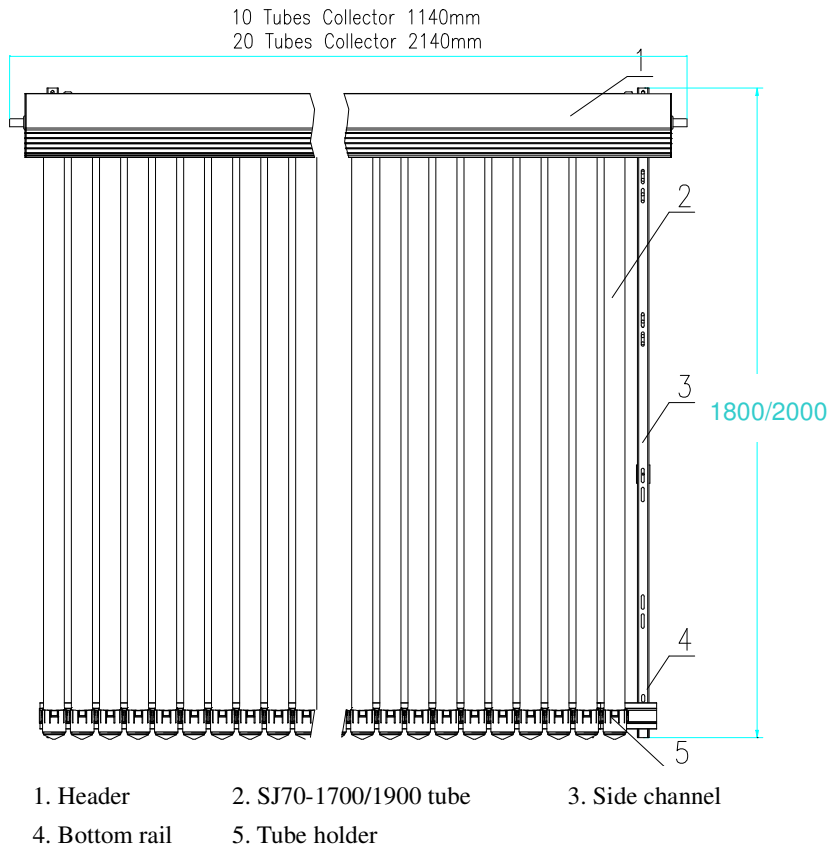


SJ Series Collector Specifications

SJ-1700/1900-XX Collector Dimensions

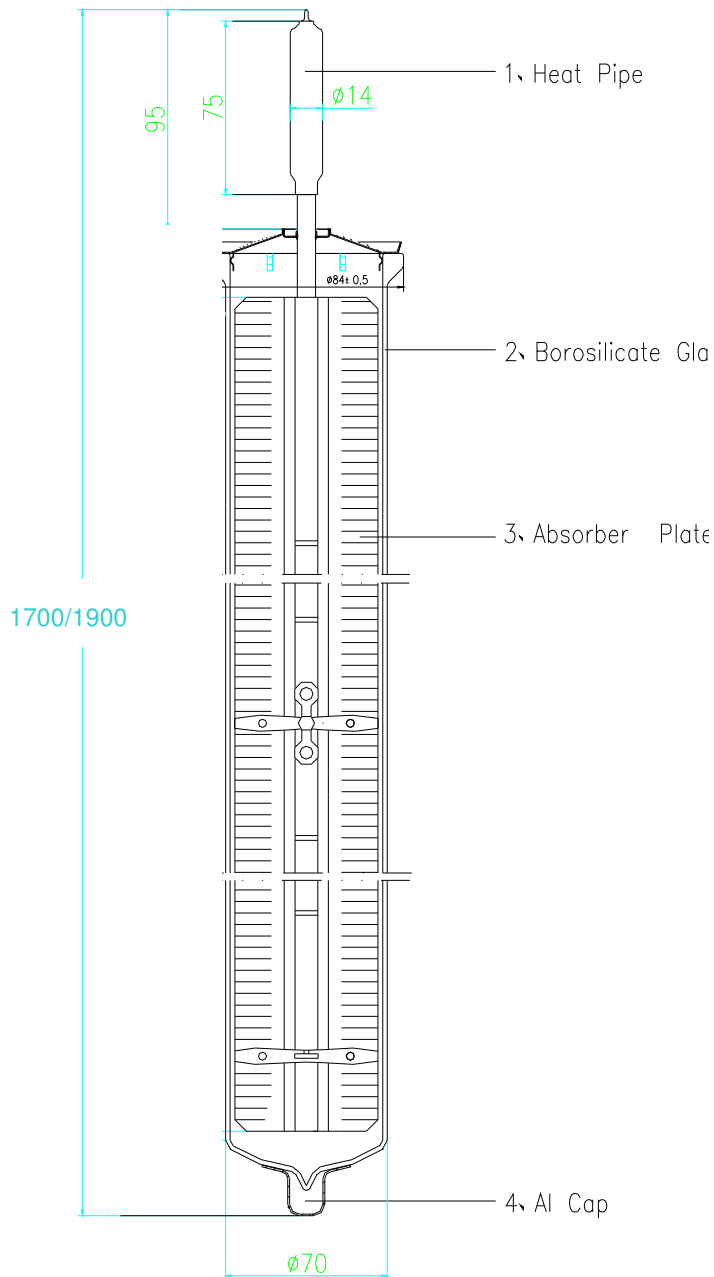


SJ Collector Specifications

Model No.	SJ-1700-10	SJ-1700-20	SJ-1900-10	SJ-1900-20
Tube structure	SJ70-1700	SJ70-1700	SJ70-1900	SJ70-1900
Number of tubes	10	20	10	20
Absorber area, m²	0.940	1.880	1.040	2.080
ft²	10.118	20.236	11.194	22.389
Aperture area, m²	1.190	2.380	1.127	2.253
ft²	12.809	25.618	12.126	24.251
Gross area, m²	2.052	3.852	2.280	4.280
ft²	22.088	41.463	24.542	46.070
Overall size, W x L, mm	1140x1800	2140x1800	1140x2000	2140x2000
ft	3.74x5.906	7.021x5.906	3.74x6.562	7.021x6.562
Weight, kg	30	50	37.4	74.8
Lbs	66.139	110.231	82.453	164.906
Volume of the fluid, L	1.77	3.6	1.77	3.6
Pressure Stand, Bar	6			
PSI	87.023			
Material of insulation	rock wool			
Material of header casing	Powder coated steel			
Material of Manifold	Copper			
Material of Frame	Aluminum			

SJ Series Collector Specifications

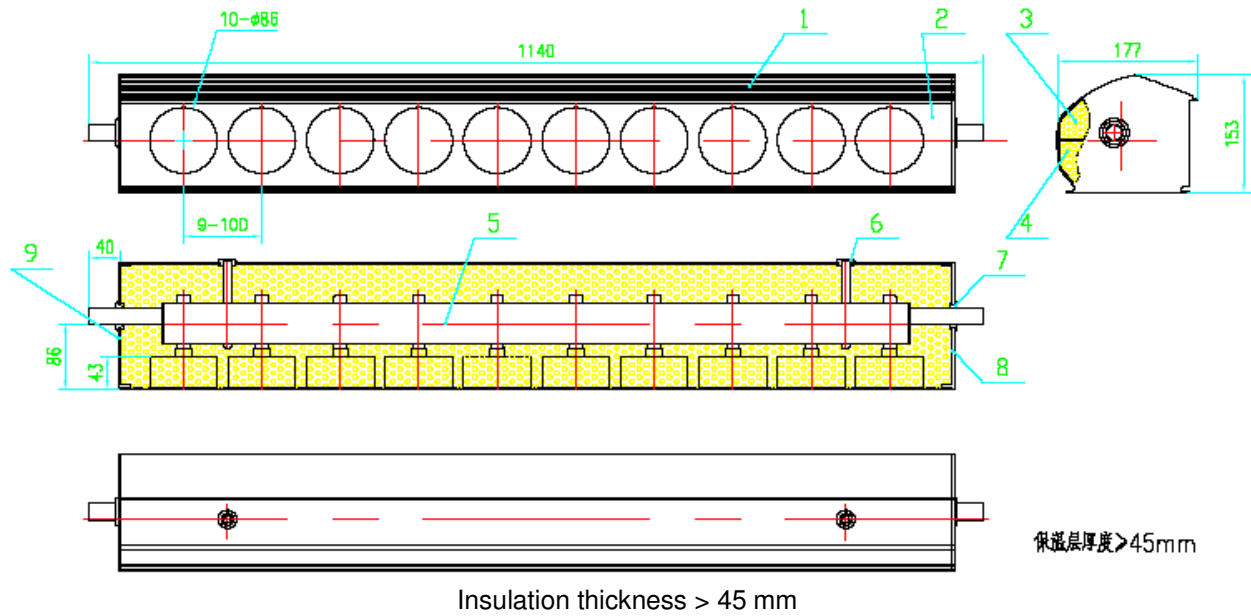
SJ70-1700/1900 Tube



Structure	Super Heat Pipe Vacuum Tube
Absorption coefficient	≥ 0.93
Emission coefficient	≤ 0.08
Isolation temperature	230°C
High vacuum, long-term stability	5×10^{-2} Pa
Freezing tolerance	-40°C
Hail resistance	$\phi 25$ mm
Wind resistance	30 m/s
Diameter of condenser	$\phi 14 \times 75$ mm
Glass material	High-quality borosilicate glass
Absorber material	Aluminum
Coating	Aluminum Nitride, black
Single tube weight	2.2 kg
Absorber area	0.094/0.104 M ²
Glass tube diameter	70 mm
Glass tube length	1700/1900 mm
Glass wall thickness	2.0 mm

SJ Series Collector Specifications

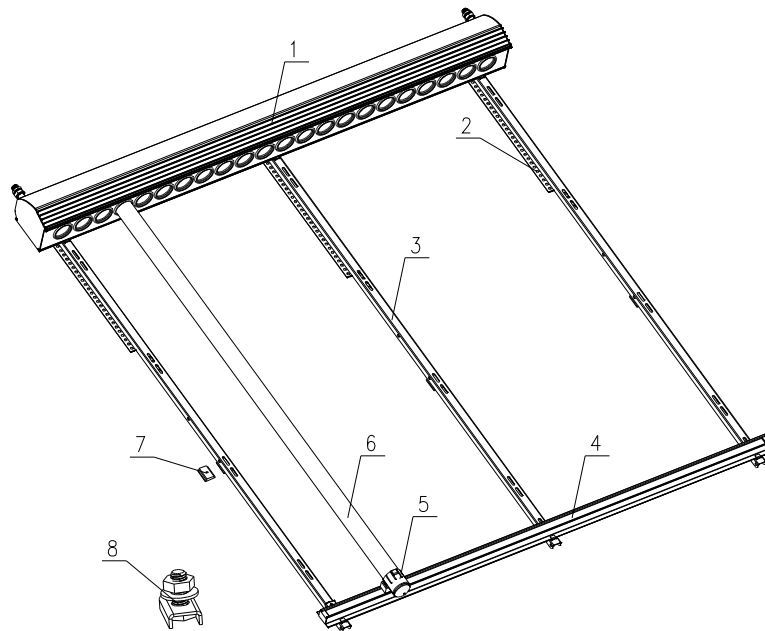
SJ-1900-XX Collector Header



- | | | | |
|-----|----------------------|-----|--------------|
| 1&2 | Header casing | 6 | Sensor well |
| 3&4 | Rock wool insulation | 7 | Sealing ring |
| 5 | Manifold | 8&9 | Side cover |

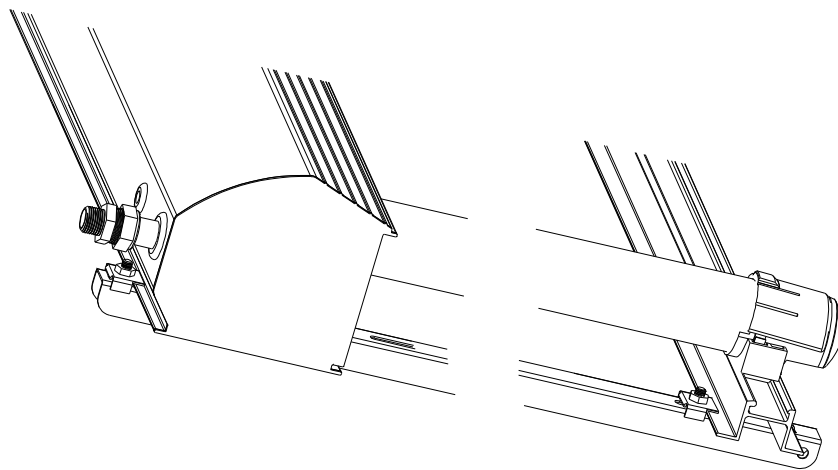
SJ Series Collector Specifications

Collector Frame Assembly



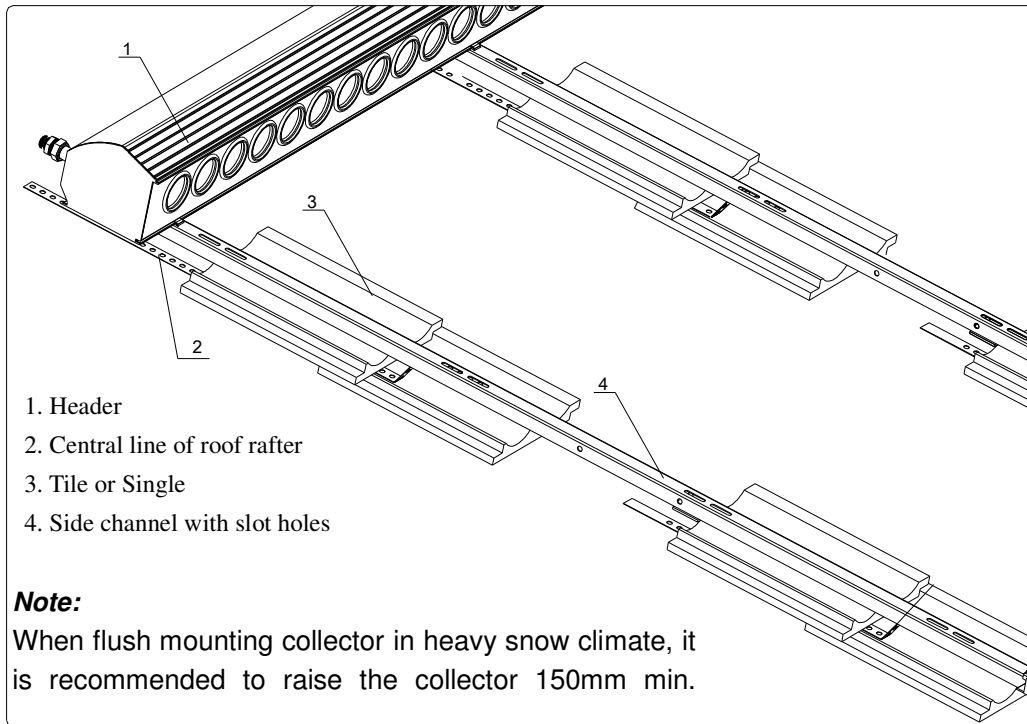
- 1.manifold 2.Roof Strap 3.Front Track 4.Bottom Track
5.Feet Holder 6.Tube 7.Rubber pad 8.Bolt&Nut Lock Assembly

Note: SJ series have only two front Tracks



SJ Series Collector Specifications

Flush Mounting for High Pitched Roof



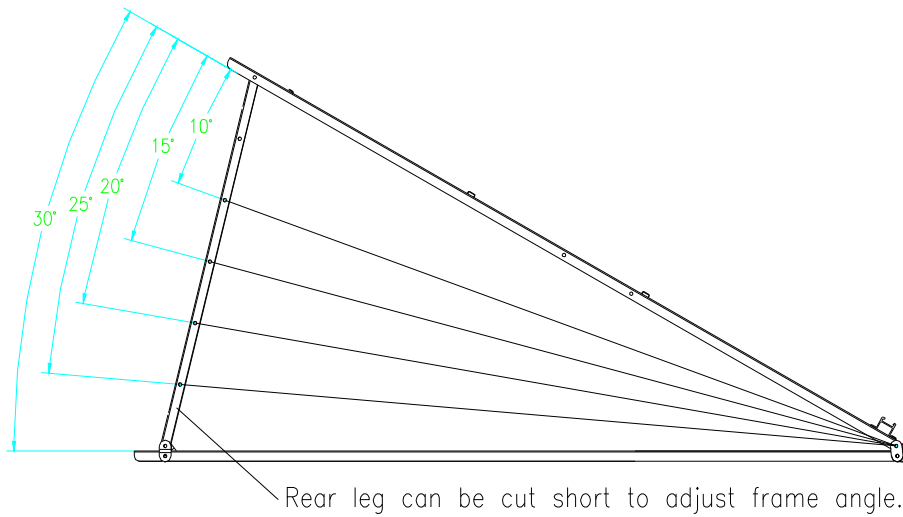
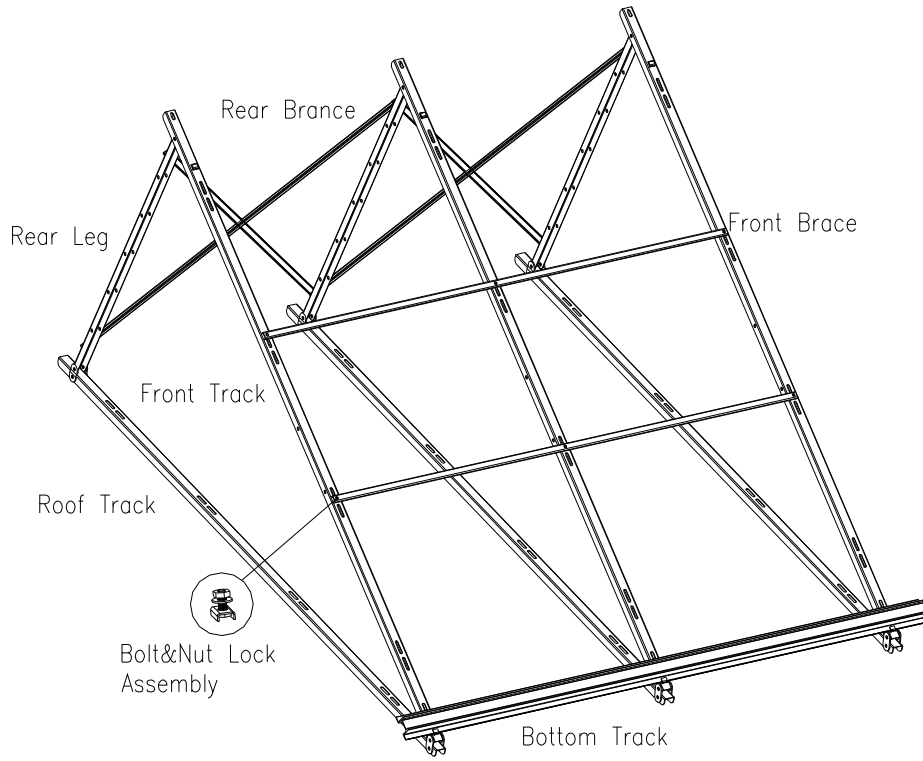
Side channels (4) can slide along the header to locate in the central line of the rafters underneath the tiles or singles.



Slot holes are available on the side channels (4) for using bolts and screws to attach the collector frame to the rafters underneath the tiles or singles

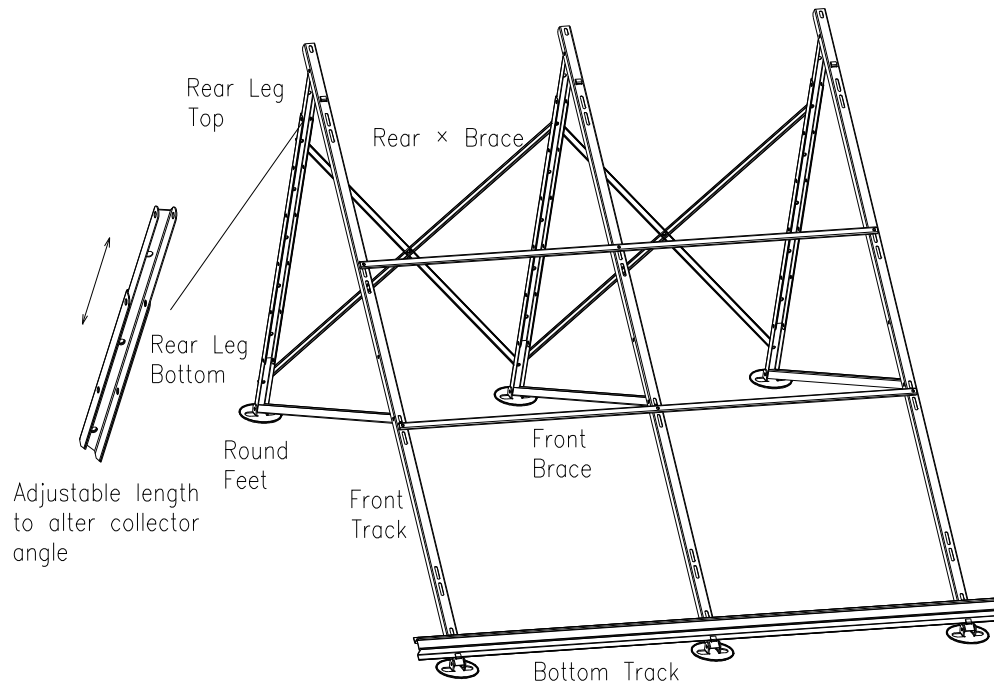
SJ Series Collector Specifications

Racking for Low-pitched Roof



SJ Series Collector Specifications

Racking for Flat Roof



NOTES: 1. Feet must be bolted to roof structure.

2. SJ series collector frames use:

- 2 sets of front track, rear legs and diagonal brace
- 1 set of rear X brace assembly